



elephant[®] γ
VESTERGAARD DE-ICING SYSTEM



AIRCRAFT SERVICE TRUCKS

THE VESTERGAARD PHILOSOPHY
 The Vestergaard range of Elephant[®] deicers provides exceptional flexibility based on operational needs in demanding airport environments. The benefits of Vestergaard engineering is ensured through the entire product line due to common design philosophy and interchangeability of parts.

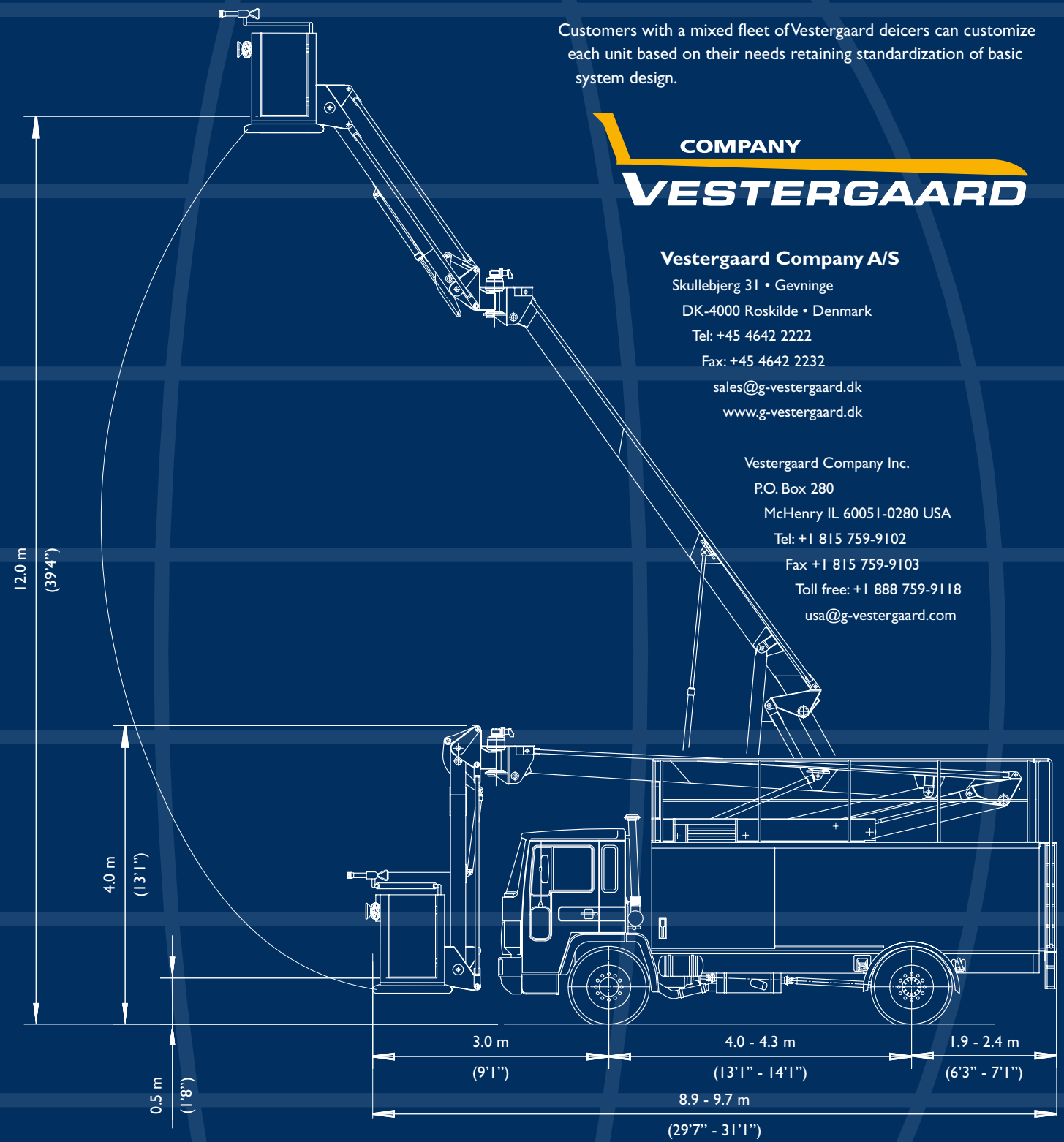
Customers with a mixed fleet of Vestergaard deicers can customize each unit based on their needs retaining standardization of basic system design.

COMPANY
VESTERGAARD

Vestergaard Company A/S

Skullebjerg 31 • Gevninge
 DK-4000 Roskilde • Denmark
 Tel: +45 4642 2222
 Fax: +45 4642 2232
 sales@g-vestergaard.dk
 www.g-vestergaard.dk

Vestergaard Company Inc.
 P.O. Box 280
 McHenry IL 60051-0280 USA
 Tel: +1 815 759-9102
 Fax +1 815 759-9103
 Toll free: +1 888 759-9118
 usa@g-vestergaard.com



Specifications			
Max. ground to basket level:	12.0 m (39'4")	Total tank capacity:	5000, 7000 or 8800 litres (1320, 1850 or 2310 gal US)
Overall height:	4.0 m (13'1")		Two or three tank configuration available.
Overall width:	2.5 m (8'3")	Weight (empty tanks):	15 tons (metric)
Overall length:	9.7 m (31'10")		

Corrosion protection by sandblasting and metallizing exposed areas before painting with primer, undercoat and top enamel, protecting hollow frame members internally.

Caution: Specifications are advisory only, and **will** vary. Please request exact data.

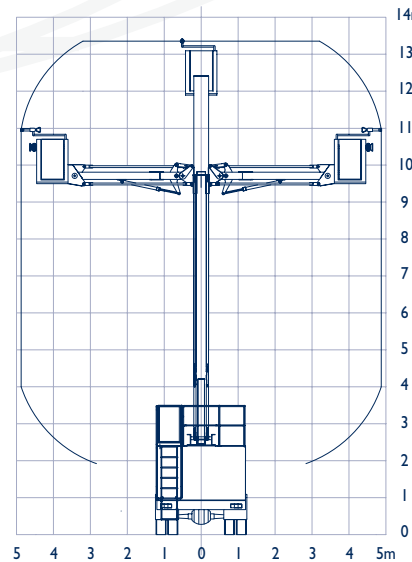


The most effective open basket aircraft deicer - the Elephant[®] Gamma

The Elephant[®] Gamma provides customers with highly efficient, reliable and safe de-icing on all types of aircraft, and fully complies with all expectations in Vestergaard Company equipment:

- Unsurpassed quality
- Customization
- Outstanding documentation and support
- Technical hotline/customer service
- Low maintenance costs

The unique design and excellent quality of the Elephant[®] Gamma provides high flexibility and cost efficient operation over the years. The Elephant[®] Gamma, mounted on a standard truck chassis, with a built-in hydrostatic drive for extremely smooth maneuvering around the aircraft, offers a vast array of options to make it the most effective open basket deicer.



THE GAMMA CONCEPT

The core concept of the Elephant[®] Gamma is its outstanding fast maneuverability to make it a highly efficient de-icing unit and an excellent work platform, for example for aircraft washing. The **unique boom system** ensures high mobility, fast operation, smooth and proportional movements as well as great versatility. The turn point is located at the outer end of the main boom. Due to the highly developed suspension boom, the basket is kept in front of the vehicle at all heights. During operations the major weight of the boom system remains on the centreline of the truck giving the Elephant[®] Gamma an unsurpassed stability.



FLUID ECONOMY

Product development continuously generates numerous features that save fluid and minimize environmental impact.

Proportional fluid mix

The Proportional Mix System provides optimal blend according to actual weather conditions, thereby saving a significant amount of fluid. The system ensures very accurate mix, fast reaction times and has a monitoring safety system.

Heating systems

In addition to the highly efficient Vestergaard heater the Batch Heating System and the Hot at Nozzle System economically and effectively provide hot fluid to the nozzle at all times.

The Batch Heating System ensures hot fluid (85°C/185°F) available immediately after refilling. The Hot at Nozzle System circulates hot fluid in external fluid lines ensuring maximum de-icing efficiency immediately when opening the nozzle. A heat exchanger can be installed for gently heating Type II/IV fluids to maximize spraying temperature.

Low flow fluid application

Thickened fluid can be applied in a uniform layer at a low flow rate maintaining fluid properties.

Forced Air System

A highly efficient snow removal procedure is provided by the maneuverable nozzle and the shortest possible blow distance.

Diaphragm pumps

To minimize fluid degradation the Elephant[®] Gamma fluid system is equipped with diaphragm pumps.

A standard chassis ensures availability of spare parts and easy maintenance. Sliding doors on each side give an easy access to the machine room to facilitate service.



With the joystick in the basket the operator has an excellent control of all movements. The all-proportional-hydraulic control of the boom ensures quick and smooth motion.

The boom-mounted basket is easy to enter from ground level.



MANPOWER EFFICIENCY

The de-icing unit can be easily switched from two-man to one-man operation and back allowing maximum **manpower flexibility**. In one-man operation mode all chassis movements are controlled from the operator's basket.

To improve the operator working conditions one of the two spray guns is mounted on a swing arm that absorbs the recoil forces.

The **Data Transmission System** organizes, collects and processes de-icing data, in order to optimize operations of the de-icing fleet. Additionally, the Data Transmission System can organize the dispatch of the de-icing fleet.

MAJOR ADVANTAGES

- Proportionally controlled boom movements ensure smooth, safe and fast cycle times
- Minimum glycol consumption
- Open basket for de-icing and for example aircraft washing
- One-man operation mode for ultimate flexibility
- Basket in front of truck at all heights
- Minimum degradation of fluids
- Single engine operation with hydrostatic drive for fast operation
- Low maintenance costs
- Two or three tank configuration

